

# EPA's Regulatory Train Wreck

## Strategies for State Legislators

---

Bryan Weynand

Energy, Environment and Agriculture Task Force Legislative Analyst  
American Legislative Exchange Council

US Climate Partnership Association  
June 27, 2011



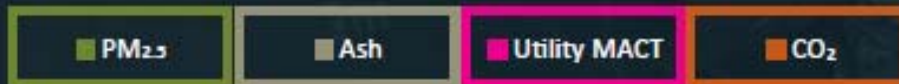
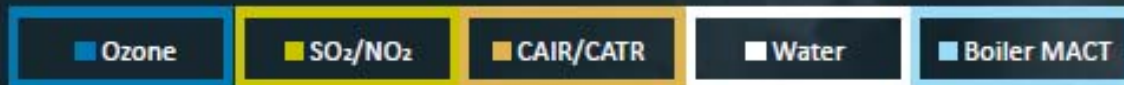
# About ALEC

---

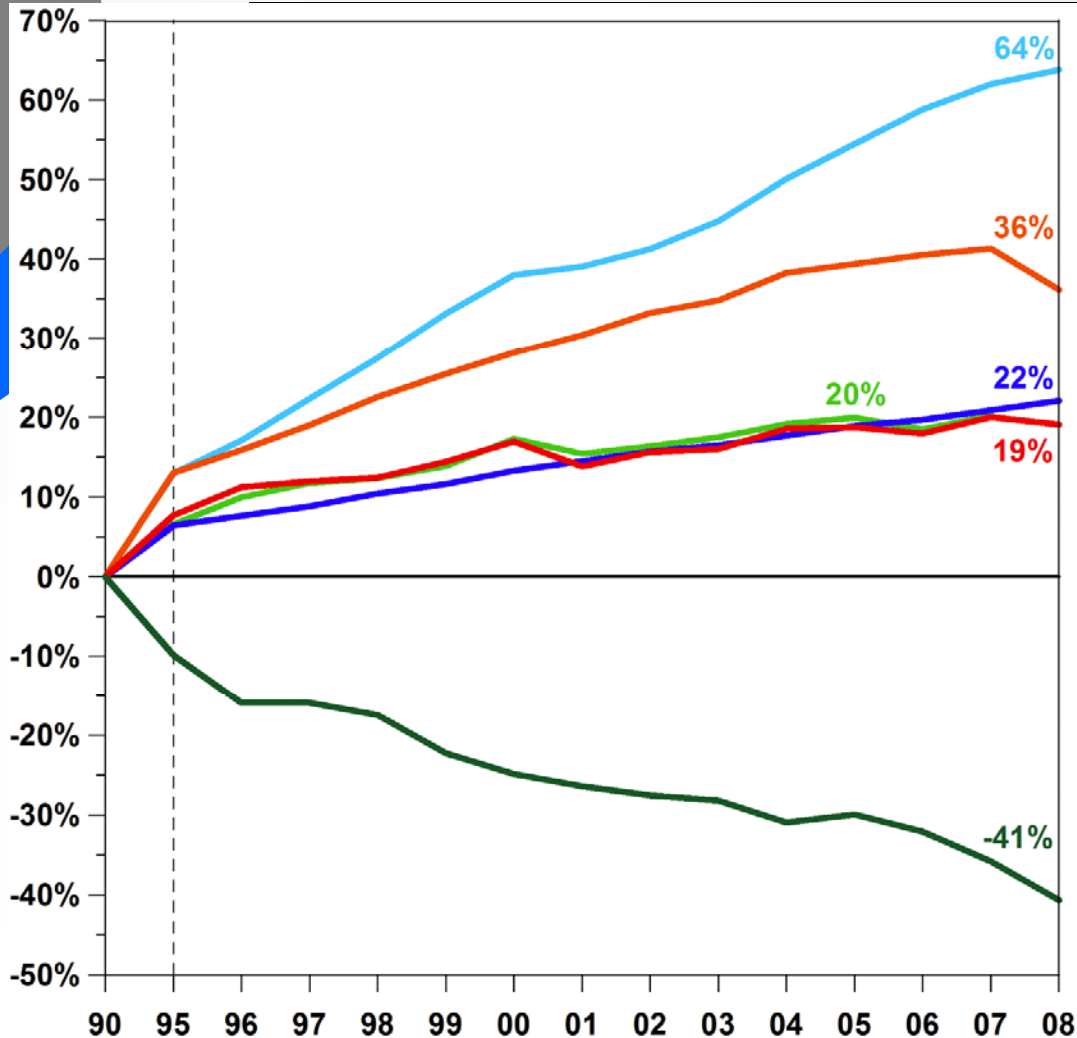
- ALEC is the nation's largest nonpartisan, individual membership organization of state legislators.
- ALEC's membership includes roughly 2,000 legislators across the country
- 101 Members of Congress are ALEC alumni.
- ALEC legislators share a commitment to the Jeffersonian principles of free markets, limited government, individual liberty, and federalism.

# EPA's Regulatory Train Wreck

Regulatory Timeline for Coal-Fueled Power Plants and Commercial Industrial Boilers  
(as of January 2011)



# True Clean Air Success Story



Gross Domestic Product



Vehicle Miles Traveled



Population



CO<sub>2</sub> Emissions



Energy Consumption

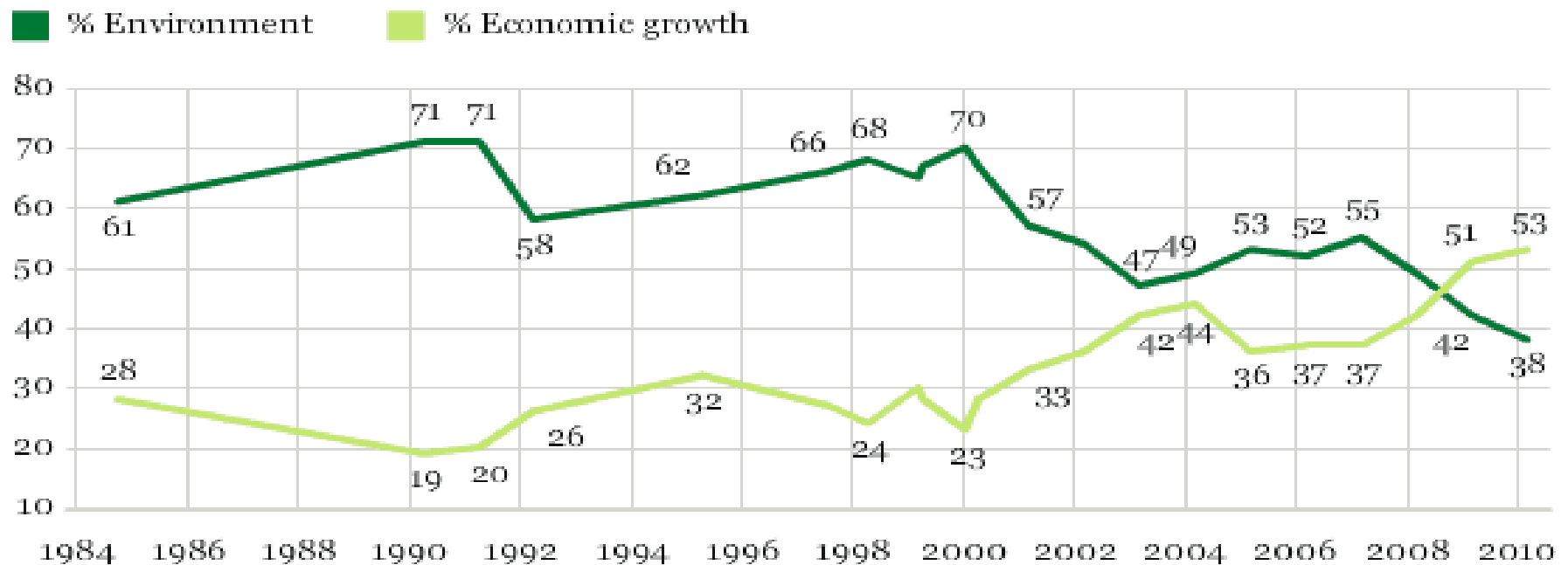


Aggregate Emissions  
(Six Common Pollutants)

# The Future

## *Environmental Protection vs. Economic Growth*

With which one of these statements about the environment and the economy do you most agree -- [protection of the environment should be given priority, even at the risk of curbing economic growth (or) economic growth should be given priority, even if the environment suffers to some extent]?



GALLUP®

AMERICAN LEGISLATIVE EXCHANGE COUNCIL  
**ALEC**





# Regional Air Quality Interstate Compact

---

- Model legislation adopted by ALEC at our Spring Task Force Summit in April
- Provides states with a constitutionally sanctioned *legislative* tool to push back on the EPA
- Texas HB 2545



# Regional Air Quality Interstate Compact

---

- Member states form a commission to issue CAA implementation guidance
- Congressional approval recognizes compact as federal law
- Model of state sovereignty and cooperative federalism restored

# Questions?

---

## **Bryan Weynand**

Energy, Environment and Agriculture Legislative Analyst  
American Legislative Exchange Council

202.379.4380

[bweynand@alec.org](mailto:bweynand@alec.org)